

Light efficiency:



Light quality:



Color temperature:



Output: 1090 lm

Peak: 8012 cd

Power: 25.0 W

PF: 0.99



Tracking number: [n/a](#)

Product name:

**Dotz Par RGBL**

Item number:

**CRI**

Date and time:

**7/11/2024 12:24:42 PM**

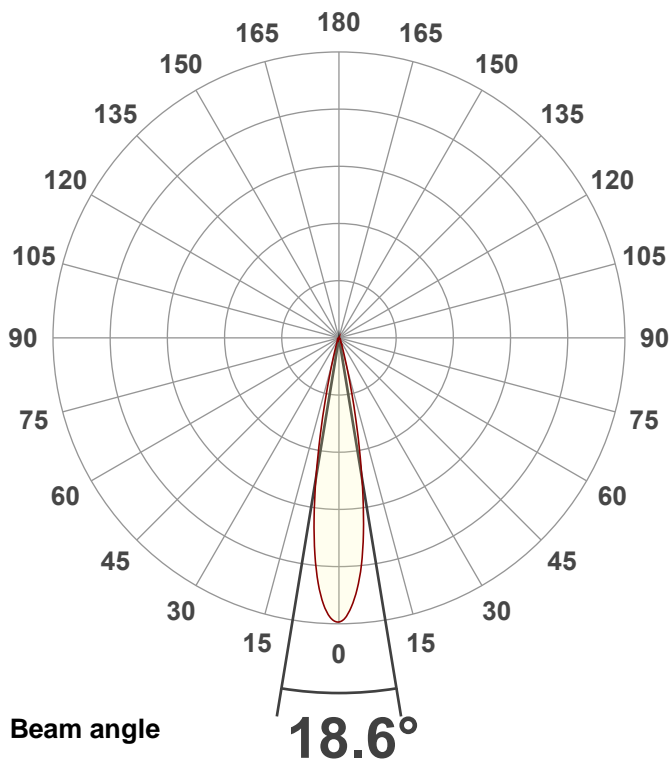
Description:

**R @ 109**

**G @ 79**

**B @ 20**

**L @ 255**

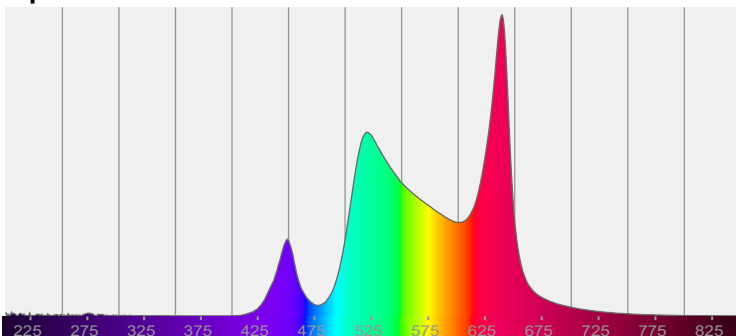


CIE 1931

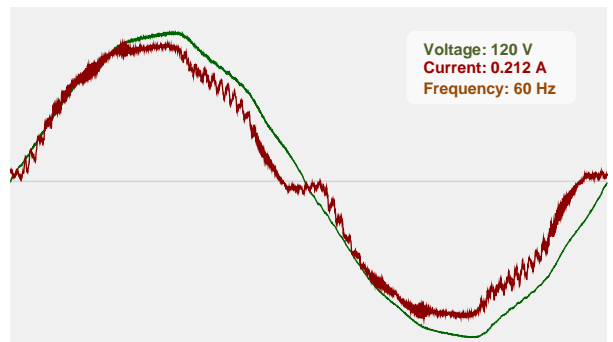
x: 0.402

y: 0.458

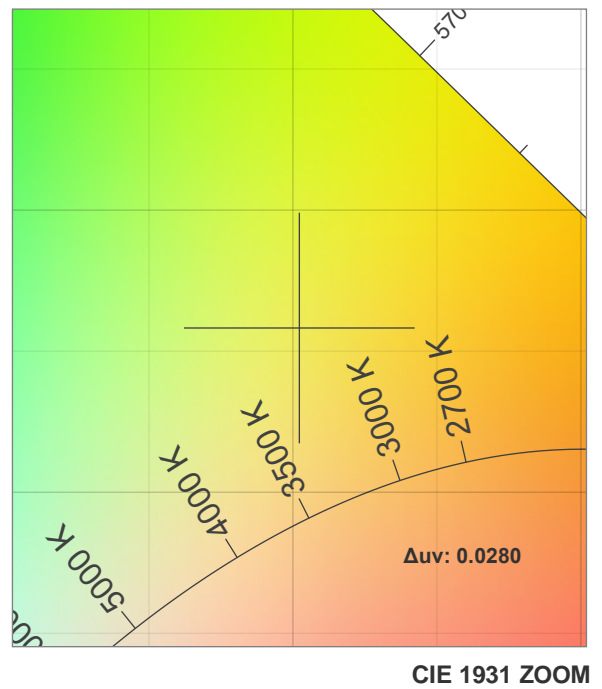
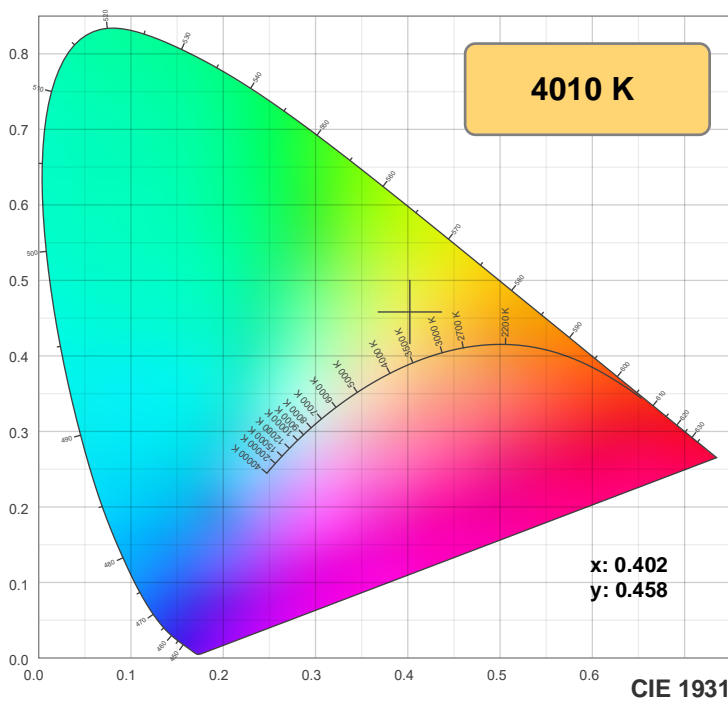
Spectra



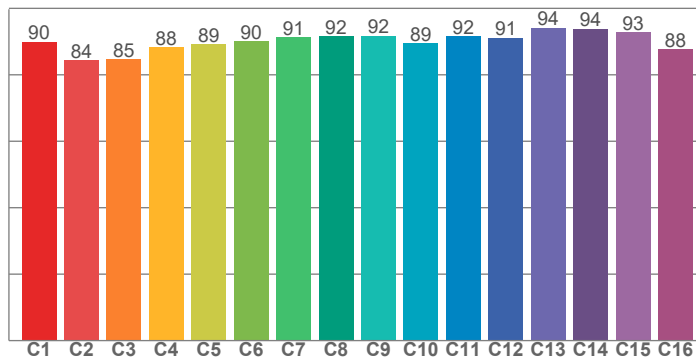
Power



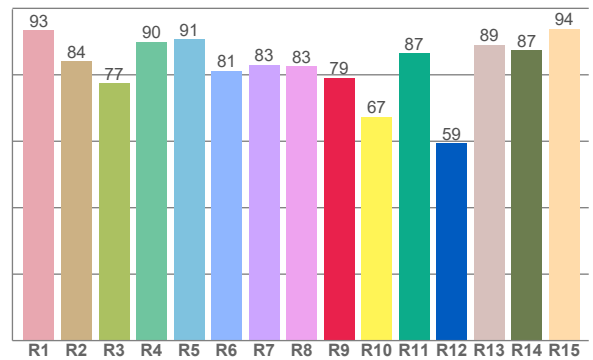
## Color details



**TM-30: 89.7**



**CRI: 85.3 (R1-R8)**



CRI R values, only R1-R8 are used to calculate final CRI value

R1	R2	R3	R4	R5	R6	R7	R8	R9	R10	R11	R12	R13	R14	R15
93.4	84.1	77.4	89.9	90.7	81.2	83.0	82.6	79.1	67.4	86.6	59.5	89.0	87.3	93.9

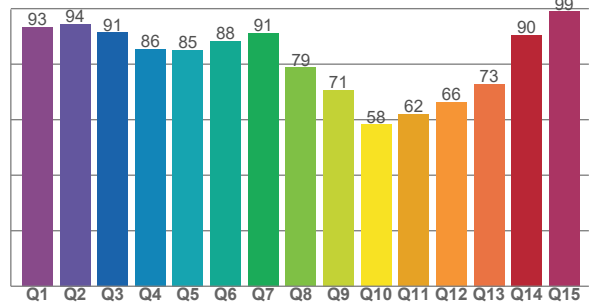
TM30 C values, 16 binned values out of total of 99 C values

C1	C2	C3	C4	C5	C6	C7	C8	C9	C10	C11	C12	C13	C14	C15	C16
89.9	84.4	84.7	88.2	89.1	90.0	91.3	91.6	91.7	89.4	91.6	91.1	94.2	93.8	92.7	87.7

CQS Q values

Q1	Q2	Q3	Q4	Q5	Q6	Q7	Q8	Q9	Q10	Q11	Q12	Q13	Q14	Q15
93.3	94.5	91.3	85.5	85.1	88.4	91.3	78.8	70.7	58.2	61.9	66.3	72.9	90.5	99.0

**CQS: 78.0**



### Color parameters

Color temperature	Color rendering index	Red component	Color fidelity	Color gamut	Color quality scale	Color coordinate cie 1931	Color coordinate cie 1931	Color coordinate	Color coordinate	Color deviation from black body
CCT	CRI	CRI R9	TM30 Rf	TM30 Rg	CQS	x	y	u	v	Δuv
4010 K	85.3	79.1	89.7	98.1	78.0	0.402	0.458	0.209	0.357	0.0280

## TM-30 details

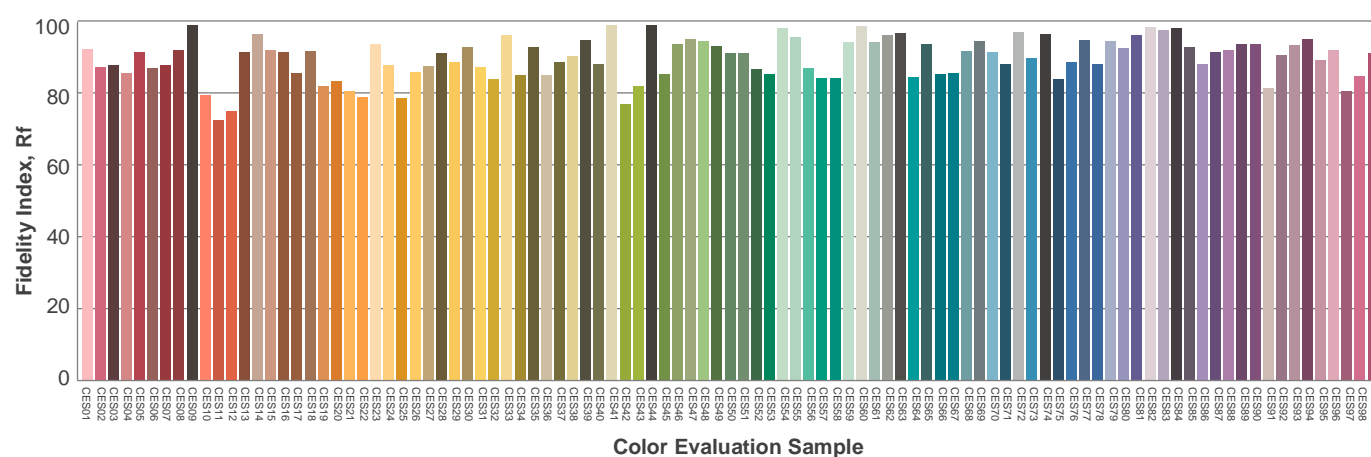
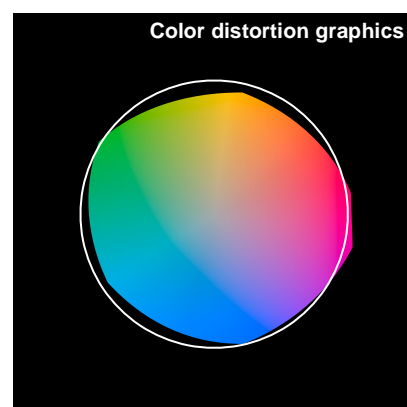
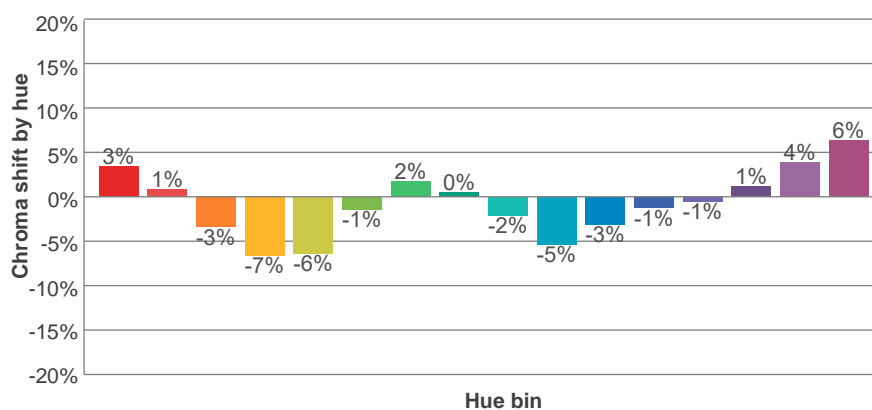
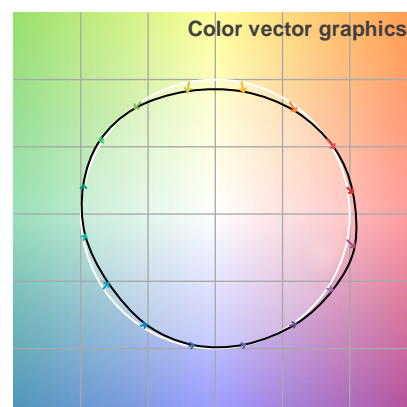
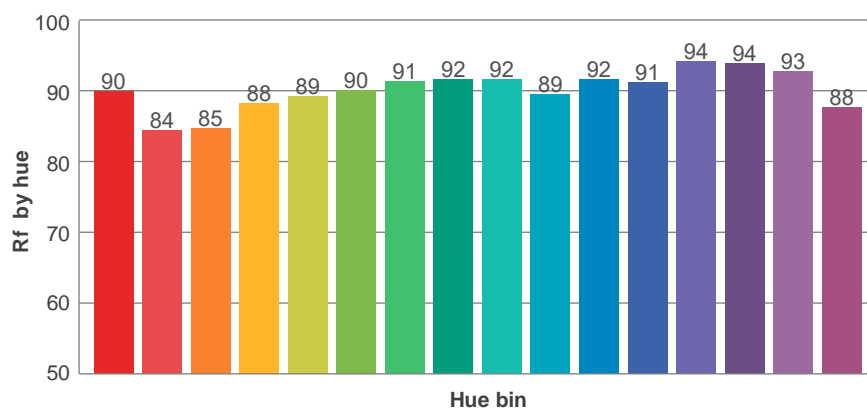
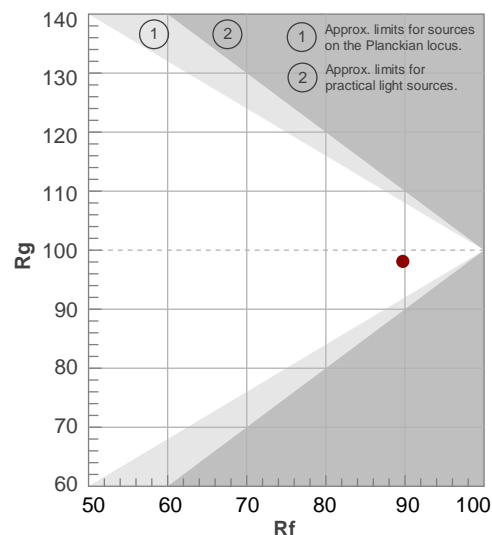
**Rf 89.7**

Fidelity index Rf

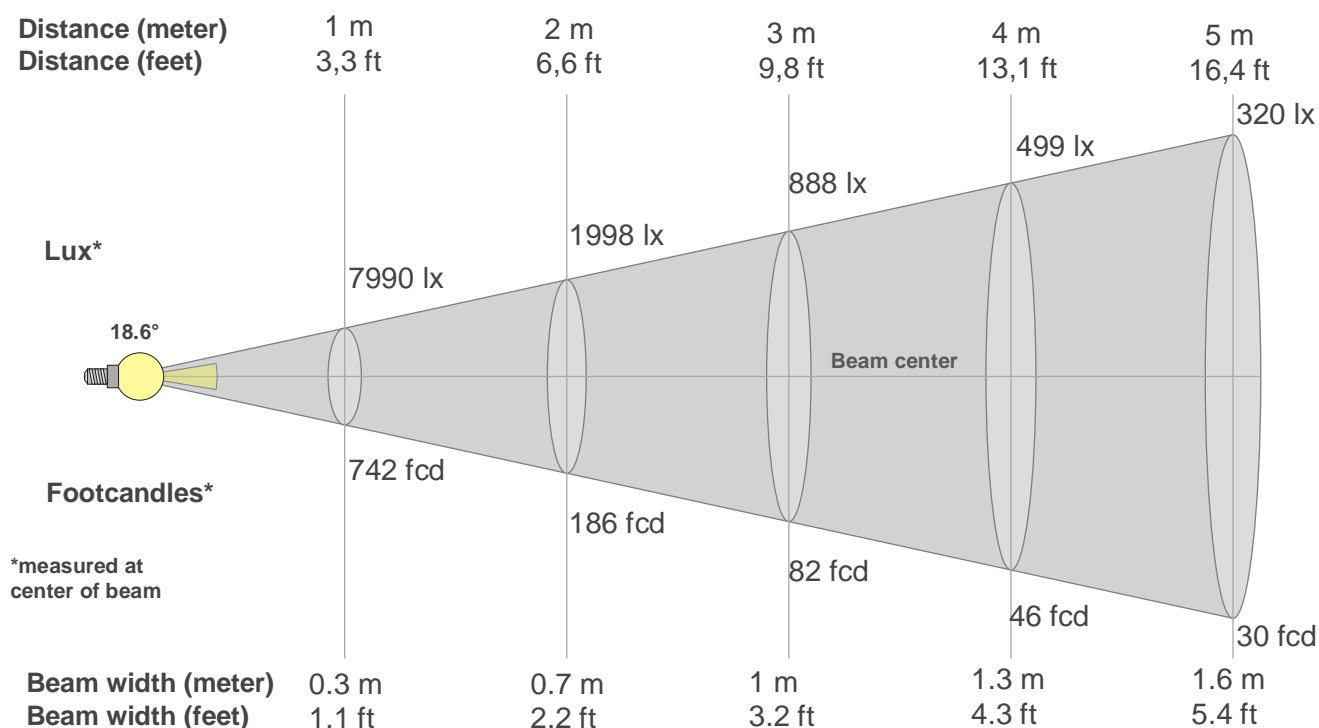
**Rg 98.1**

Gamut index Rg

Hue Bin	R <sub>f</sub>	Shifts (%)	
		Chroma	Hue
1	90	3%	-4%
2	84	1%	-8%
3	85	-3%	-7%
4	88	-7%	-3%
5	89	-6%	3%
6	90	-1%	6%
7	91	2%	3%
8	92	0%	-2%
9	92	-2%	-4%
10	89	-5%	-2%
11	92	-3%	3%
12	91	-1%	3%
13	94	-1%	3%
14	94	1%	4%
15	93	4%	2%
16	88	6%	-4%



## Beam details



### Beam intensities from 1-20m

1m	2m	3m	4m	5m	6m	7m	8m	9m	10m	11m	12m	13m	14m	15m	16m	17m	18m	19m	20m
3.3ft	6.6ft	9.8ft	13.1ft	16.4ft	19.7ft	23ft	26.2ft	29.5ft	32.8ft	36.1ft	39.4ft	42.7ft	45.9ft	49.2ft	52.5ft	55.8ft	59.1ft	62.3ft	65.6ft
7990lx	1998lx	888lx	499lx	320lx	222lx	163lx	125lx	99lx	80lx	66lx	55lx	47lx	41lx	36lx	31lx	28lx	25lx	22lx	20lx
742.3fcd	185.6fcd	82.5fcd	46.4fcd	29.7fcd	20.6fcd	15.1fcd	11.6fcd	9.2fcd	7.4fcd	6.1fcd	5.2fcd	4.4fcd	3.8fcd	3.3fcd	2.9fcd	2.6fcd	2.3fcd	2.1fcd	1.9fcd

### Intensities in 0° c-plane

0°	1°	2°	3°	4°	5°	6°	7°	8°	9°	10°	11°	12°	13°	14°	15°	16°	17°	18°	19°
7990	7928	7732	7475	7147	6722	6227	5637	4951	4239	3506	2821	2191	1646	1238	905	668	526	415	334
100%	99%	97%	94%	89%	84%	78%	71%	62%	53%	44%	35%	27%	21%	15%	11%	8%	7%	5%	4%

### Intensities in 90° c-plane

0°	1°	2°	3°	4°	5°	6°	7°	8°	9°	10°	11°	12°	13°	14°	15°	16°	17°	18°	19°
7990	7928	7732	7475	7147	6722	6227	5637	4951	4239	3506	2821	2191	1646	1238	905	668	526	415	334
100%	99%	97%	94%	89%	84%	78%	71%	62%	53%	44%	35%	27%	21%	15%	11%	8%	7%	5%	4%

### Intensities in 180° c-plane

0°	1°	2°	3°	4°	5°	6°	7°	8°	9°	10°	11°	12°	13°	14°	15°	16°	17°	18°	19°
7990	7953	7840	7601	7265	6857	6323	5700	5016	4250	3475	2712	2038	1499	1061	784	588	445	357	293
100%	100%	98%	95%	91%	86%	79%	71%	63%	53%	43%	34%	26%	19%	13%	10%	7%	6%	4%	4%

### Intensities in 270° c-plane

0°	1°	2°	3°	4°	5°	6°	7°	8°	9°	10°	11°	12°	13°	14°	15°	16°	17°	18°	19°
7990	7953	7840	7601	7265	6857	6323	5700	5016	4250	3475	2712	2038	1499	1061	784	588	445	357	293
100%	100%	98%	95%	91%	86%	79%	71%	63%	53%	43%	34%	26%	19%	13%	10%	7%	6%	4%	4%

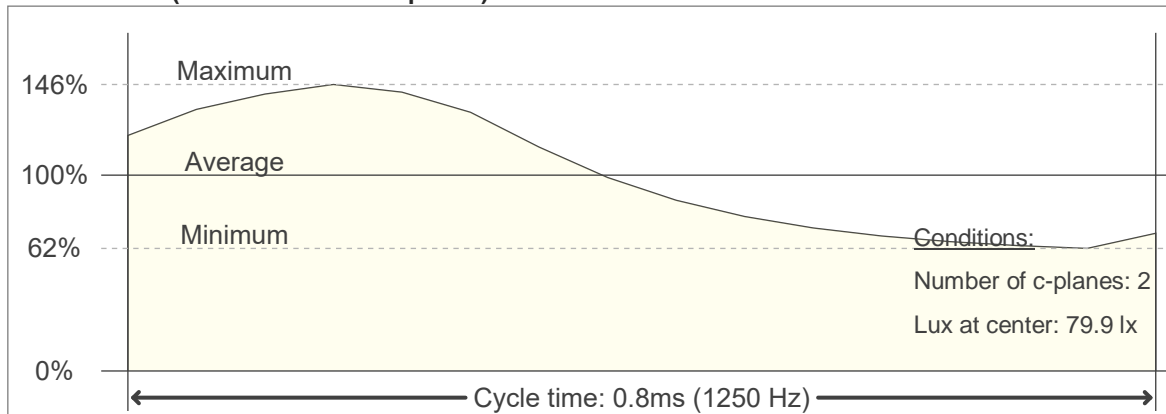
Beam angle 50%	Field angle 10%	Cutoff angle 2,5%	Intensity ratio in 120° cone	Intensity ratio in 90° cone
18.6°	30.4°	43.3°	95.5%	89.7%

## Flicker

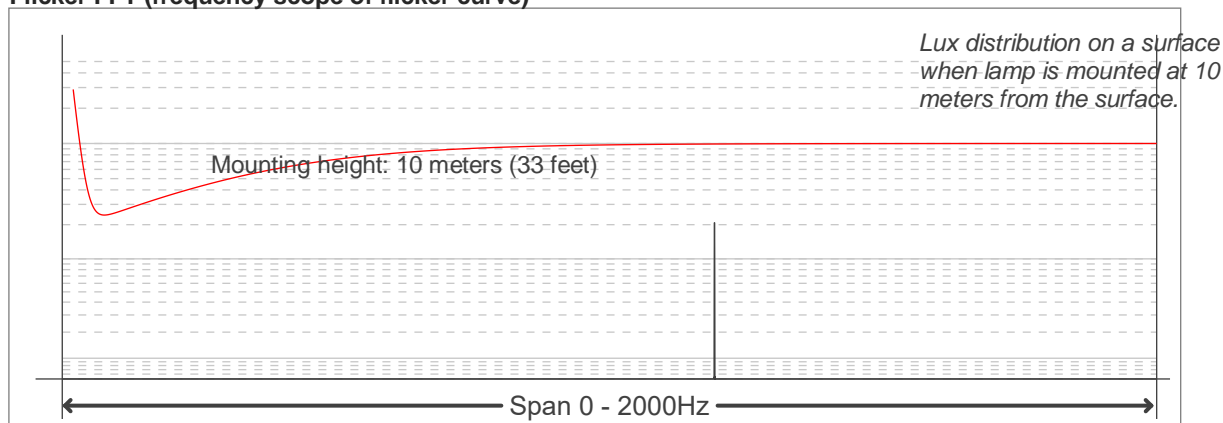
Flicker curve (complete sampled flicker signal)



Flicker frame (frame of one flicker period)



Flicker FFT (frequency scope of flicker curve)



### Flicker results:

Flicker frequency:		1250 Hz	
Flicker index:	0.14	JA8/10 40Hz	0.06 %
Flicker percentage:	43.83 %	JA8/10 90Hz	0.1 %
SVM: (Visual flicker)	0.42	JA8/10 200Hz	0.23 %
PstLM	0.03	JA8/10 400Hz	0.66 %
Mp	0.03	JA8/10 1000Hz	6.45 %

### Flicker conditions:

Sample rate:	20000 samples/second
--------------	----------------------